

Drainage Mat DF

Product Bulletin

Drainage Mat DF is a composite, dual function product. It consists of a nylon entangled filament core that is thermally bonded to spun bonded continuous bi-component fiber non-woven fabric.

USES

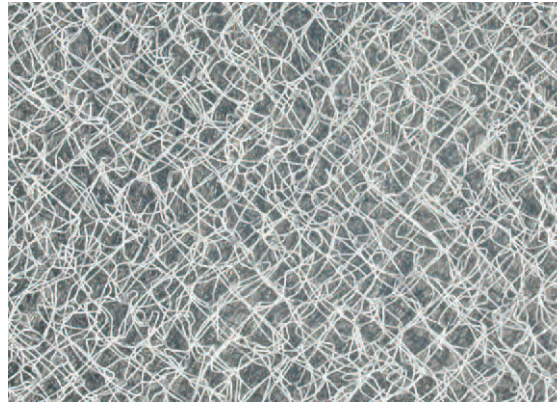
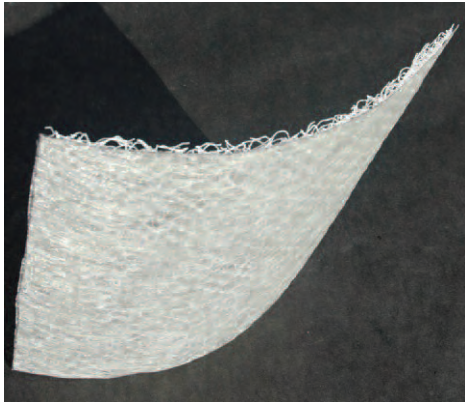
For use with cement plaster stucco wall systems and other wall cladding applications to provide a defined drainage plane with an avenue for flow and drainage of incidental moisture penetration from the wall assembly.

COVERAGE

Approximate coverage rates are as follows: 487.5 ft² per roll.

PACKAGING

39" x 150 ft rolls, 6 rolls per pallet. Gross roll weight 25 lbs.



Advantages

150 foot roll minimizes number of seams to speed application

Entangled filament construction creates optimal drainage plane while retaining flexibility

Lightweight; easy to handle

Non-scratch nylon construction provides flexibility, enhances easy application

Drainage Mat DF prevents the cement plaster from blocking the drainage plane; enables rain screen design for maximum drainage and ventilation efficiency

Drainage Mat DF

PHYSICAL PROPERTIES

Property

Core Material	Virgin & Recycled Nylon 6
Core Color	White
Thickness	7.6 mm (5/16")
Total Weight	222.8 g/m ² (6.57 oz/yd ²)
Core Weight	172.9 g/m ² (5.1 oz/yd ²)
Recycled Content	Min. - Core 40% Pre Consumer (by weight)
Recycled Content	Min. - Total 31% Pre Consumer (by weight)

TECHNICAL SUPPORT

Consult our Technical Services Department for specific recommendations concerning all other applications. Consult the BASF Wall Systems website, www.wallsystems.basf.com, for additional information about products and systems and for updated literature.

APPLICATION

Job Conditions

Temporary Protection: Protect DRAINAGE MAT DF during transportation, storage and installation to avoid physical damage. Store DRAINAGE MAT DF off the ground, protected from direct sunlight, weather and other construction site activities.

Surface Prep

Weep Screed and window head flashing will have been installed prior to application of fluid applied air/water-resistive barrier. Acceptable substrates will have been coated with fluid applied air/water-resistive barrier and all openings properly flashed prior to installing DRAINAGE MAT DF. Confirm that application of fluid applied air/water-resistive barrier was performed in accordance with product application instructions.

Equipment

Use scissors and/or knife for cutting DRAINAGE MAT DF; tack hammer and/or staple gun for attaching it to the wall.

Procedure

1. Apply DRAINAGE MAT DF horizontally over dry fluid applied air/water-resistive barrier. DRAINAGE MAT DF should be free of wrinkles, creases and tears. The fabric side of the DRAINAGE MAT DF shall face outward toward the installer, and the nylon mat shall be in contact with the surface of the fluid applied air/water-resistive barrier.
2. Secure DRAINAGE MAT DF to substrate with sufficient building staples or galvanized nails to remain in place prior to application of exterior cladding system.
3. To prevent sagging of DRAINAGE MAT DF install casing beads, control joints, expansion joints and corner beads within 24 hours after DRAINAGE MAT DF installation.

LIMITATIONS

Stacking

Do not stack pallets.

Note

BASF Wall Systems is an operating unit of BASF Construction Chemicals, LLC (herein after referred to as "BASF Wall Systems")

Residential Policy

Apply wall systems in accordance with local building codes in force at the time of construction. On one and two-family residential framed construction, BASF Wall Systems requires that the wall system selected be one that includes provisions for moisture drainage.

Disclaimer

This information and all further technical advice are based on BASF's present knowledge and experience. However, BASF assumes no liability for providing such information and advice including the extent to which such information and advice may relate to existing third party intellectual property rights, especially patent rights. In particular, BASF disclaims all CONDITIONS AND WARRANTIES, WHETHER EXPRESS OR IMPLIED, INCLUDING THE IMPLIED WARRANTIES OF FITNESS FOR A PARTICULAR PURPOSE OR MERCHANTABILITY. BASF SHALL NOT BE RESPONSIBLE FOR CONSEQUENTIAL, INDIRECT OR INCIDENTAL DAMAGES (INCLUDING LOSS OF PROFITS) OF ANY KIND. BASF reserves the right to make any changes according to technological progress or further developments. It is the customer's responsibility and obligation to carefully inspect and test any incoming goods. Performance of the product(s) described herein should be verified by testing and carried out only by qualified experts. It is the sole responsibility of the customer to carry out and arrange for any such testing. Reference to trade names used by other companies is neither a recommendation, nor an endorsement of any product and does not imply that similar products could not be used.

BASF Wall Systems

3550 St. Johns Bluff Road South
Jacksonville, FL 32224-2614
Phone 800 • 221 • 9255
Fax 904 • 996 • 6300
www.wallsystems.basf.com