

Senershield[®]-R / Senershield[®]-VB

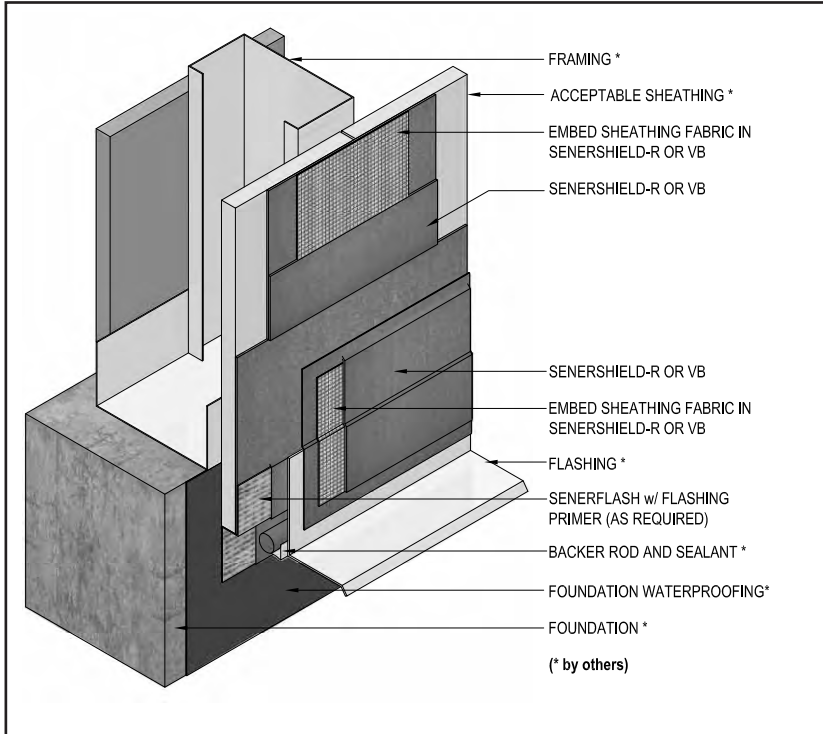
Air / Water-Resistive Barrier Typical Details



1. Termination at Grade - Sheathing Overlapping Foundation
2. Termination at Grade - Sheathing Overlapping Foundation with EIFS
3. Termination at Grade - Sheathing Overlapping Foundation with Siding
4. Termination at Grade - Sheathing Flush with Foundation
5. Termination at Grade - Sheathing Flush with Foundation and EIFS
6. Termination at Grade - Sheathing Flush with Foundation and Siding
7. Termination at Grade - Brick
8. Termination at Grade - Masonry Veneer
9. Typical Window Head
10. Typical Window Jamb
11. Typical Window Sill
12. Typical EIFS Abutment to Brick with Drainage at Floorline
13. Typical EIFS Abutment to Brick
14. Typical EIFS Abutment to Siding
15. Typical EIFS Abutment to Masonry Veneer
16. Typical Inside Corner Change in Substrate
17. Typical Brick Anchor Treatment
18. Typical Brick Expansion Joint
19. Typical Joint and Fastener Treatment
20. Typical Vertical Expansion Joint
21. Typical Rough Opening Corner Reinforcement
22. Typical Rough Opening Reinforcement
23. Typical Pan Flashing
24. Typical Saddle Application
25. Typical Kick-Out Flashing
26. Typical Roof Edge Flashing
27. Typical Parapet Cap Flashing
28. Typical Penetration through Wall Construction (Rough Cut)
29. Typical Penetration through Wall Construction

Senershield®-R / Senershield®-VB

TERMINATION AT GRADE - SHEATHING OVERLAPPING FOUNDATION

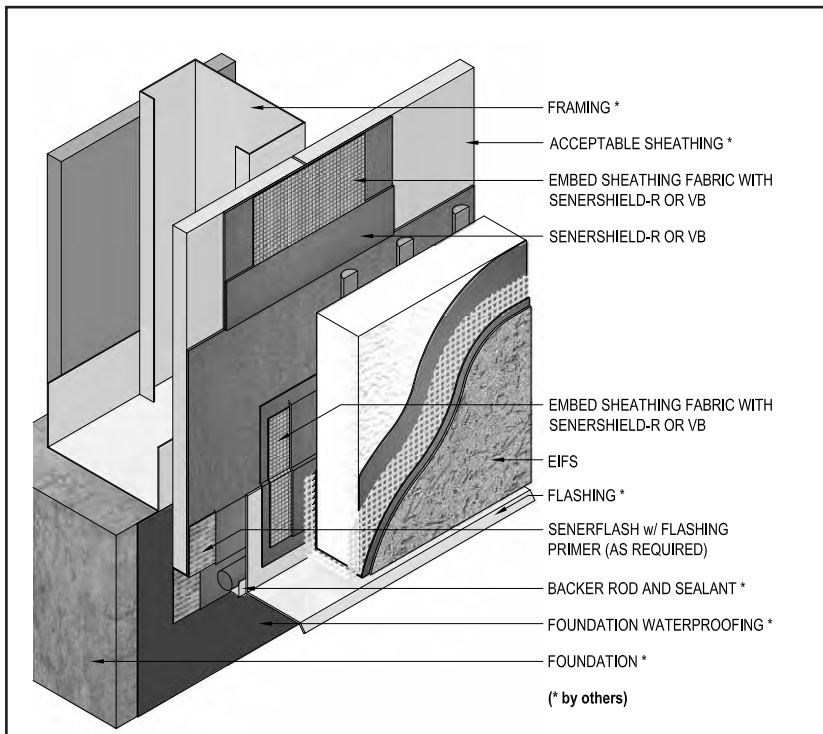


AWRB-01 0110

Notes:

- Install BASF materials in accordance with current installation instructions.
- Ensure Senershield-R / Senershield-VB fully covers Senerflash at overlap.
- Extend flashing over coated Senerflash on foundation.

TERMINATION AT GRADE - SHEATHING OVERLAPPING FOUNDATION WITH EIFS



AWRB-02 0110

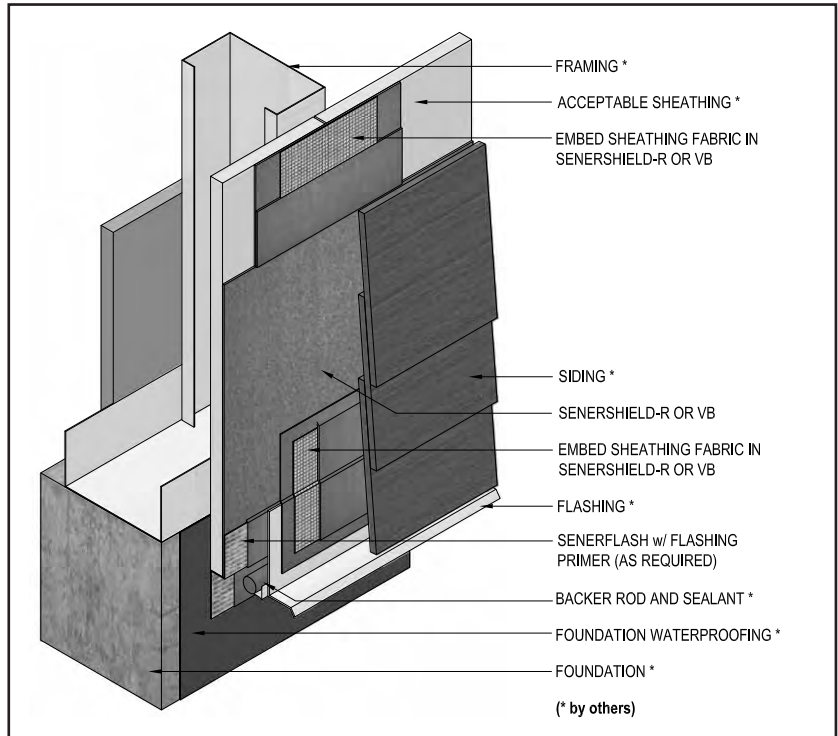
Notes:

- Install BASF materials in accordance with current installation instructions.
- Ensure / Senershield-VB fully covers Senerflash at overlap.
- Extend flashing over coated Senerflash on foundation.

TERMINATION AT GRADE - SHEATHING OVERLAPPING FOUNDATION WITH SIDING

Notes:

- Install BASF materials in accordance with current installation instructions.
- Ensure / Senershield-VB fully covers Senerflash at overlap.
- Extend flashing over coated Senerflash on foundation.
- Contact siding manufacturer for installation instructions.

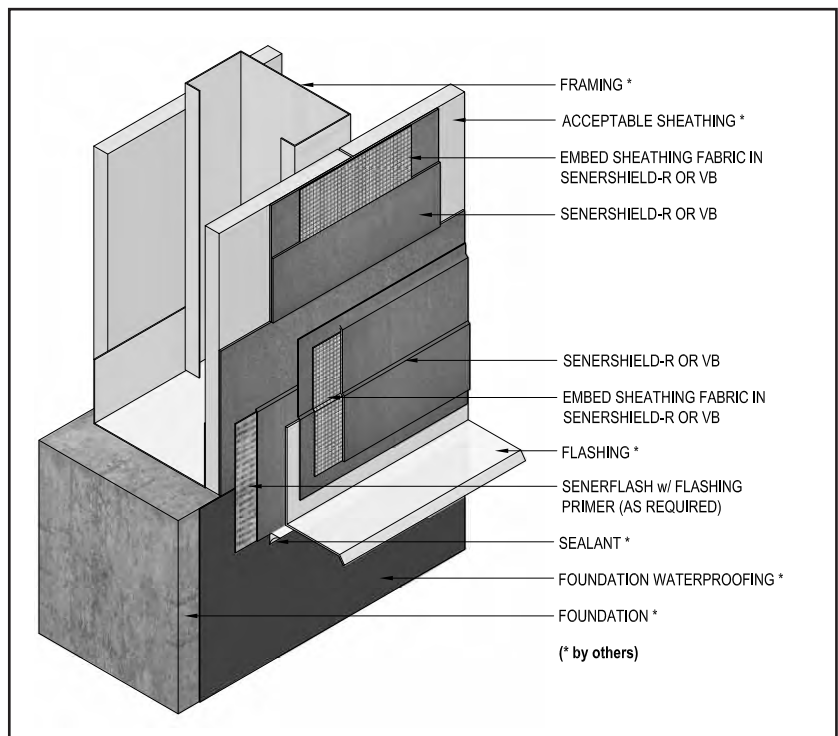


AWRB-03 0110

TERMINATION AT GRADE - SHEATHING FLUSH WITH FOUNDATION

Notes:

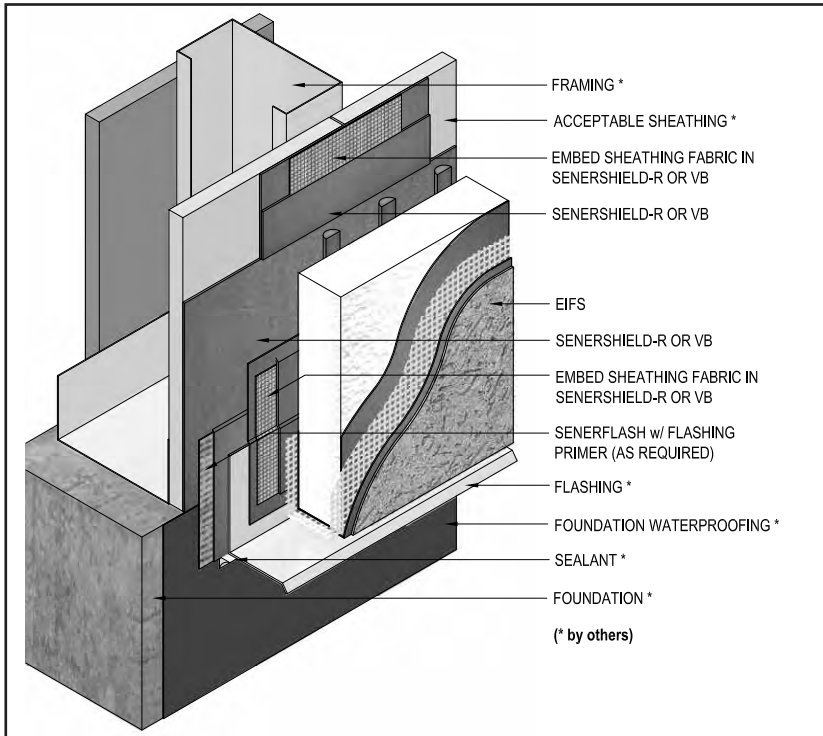
- Install BASF materials in accordance with current installation instructions.
- Ensure Senershield-R / Senershield-VB fully covers Senerflash at overlap.
- Extend flashing over coated Senerflash on foundation.



AWRB-04 0110

Senershield®-R / Senershield®-VB

TERMINATION AT GRADE - SHEATHING FLUSH WITH FOUNDATION AND EIFS

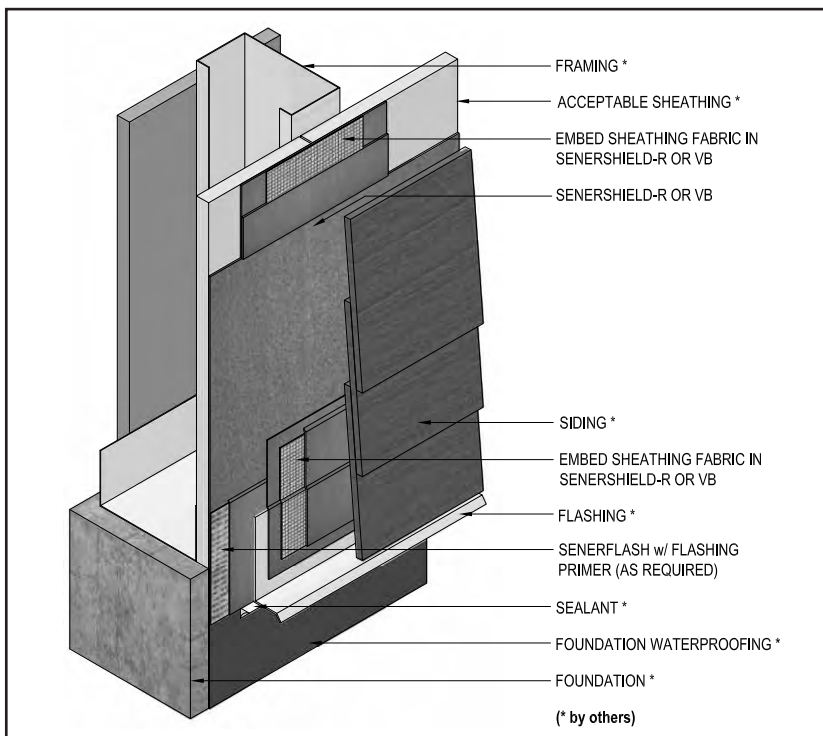


AWRB-05 0110

Notes:

- Install BASF materials in accordance with current installation instructions.
- Ensure Senershield-R / Senershield-VB fully covers Senerflash at overlap.
- Extend flashing over coated Senerflash on foundation.

TERMINATION AT GRADE - SHEATHING FLUSH WITH FOUNDATION AND SIDING



AWRB-06 0110

Notes:

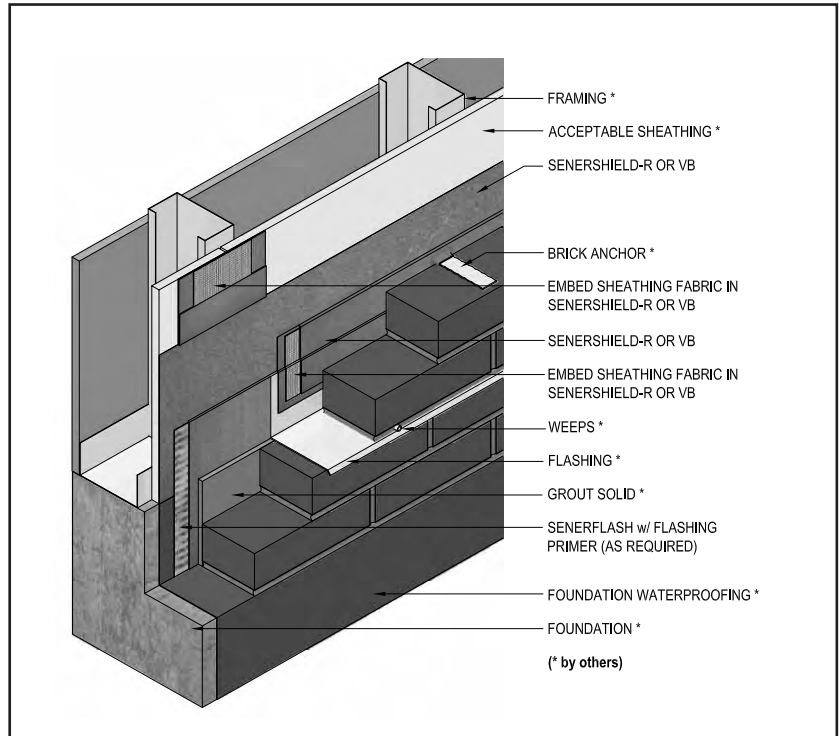
- Install BASF materials in accordance with current installation instructions.
- Ensure Senershield-R / Senershield-VB fully covers Senerflash at overlap.
- Extend flashing over coated Senerflash on foundation.
- Contact siding manufacturer for installation instructions.

Air/Water-Resistive Barrier Details

Notes:

- Install BASF materials in accordance with current installation instructions.
- Ensure Senershield-R / Senershield-VB fully covers Senerflash at overlap.

TERMINATION AT GRADE - BRICK

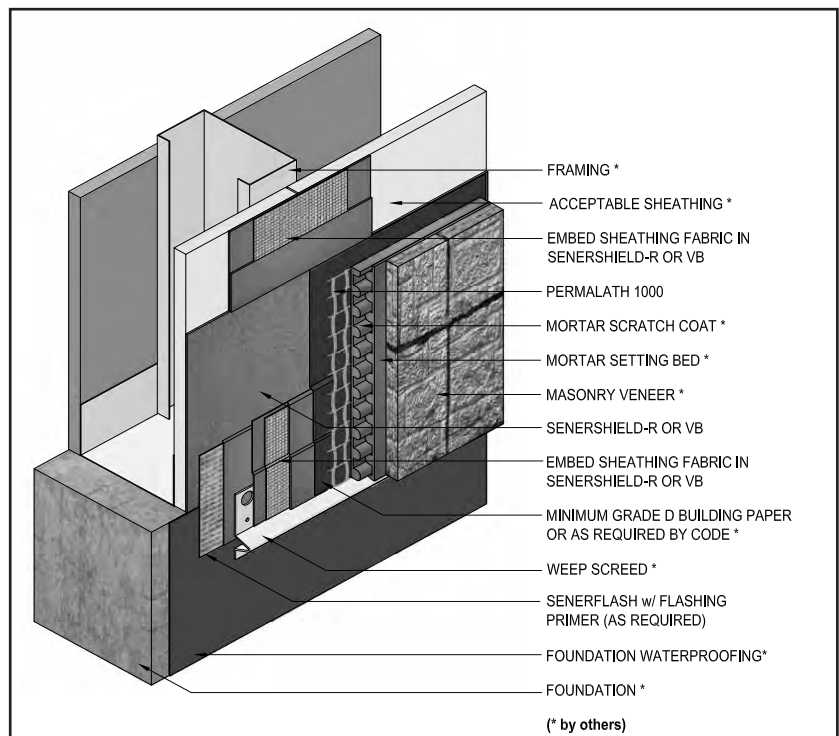


AWRB-07 0110

Notes:

- Install BASF materials in accordance with current installation instructions.
- Ensure Senershield-R / Senershield-VB fully covers Senerflash at overlap.

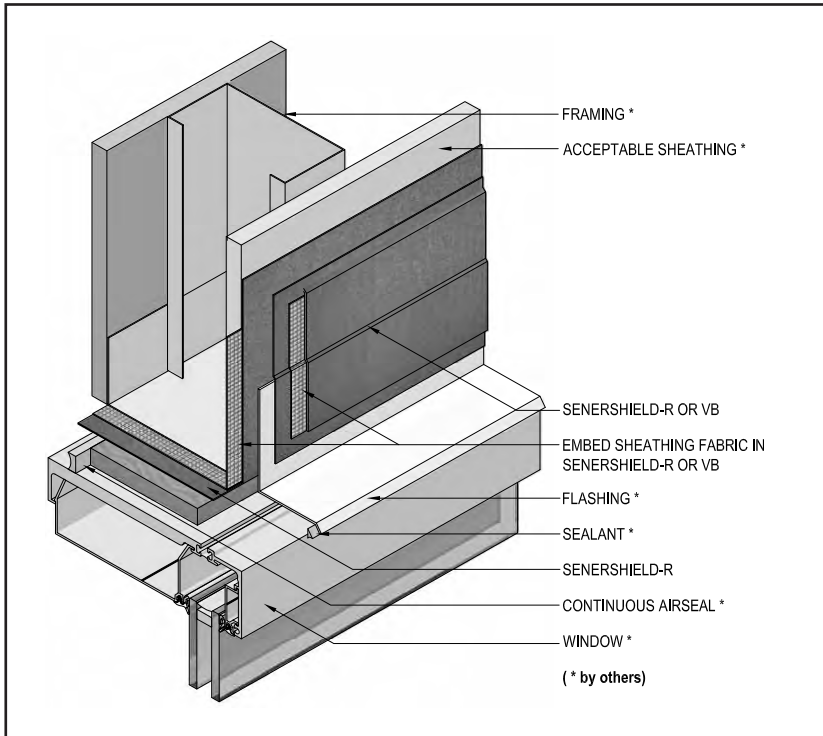
TERMINATION AT GRADE - MASONRY VENEER



AWRB-08 0110

Senershield®-R / Senershield®-VB

TYPICAL WINDOW HEAD

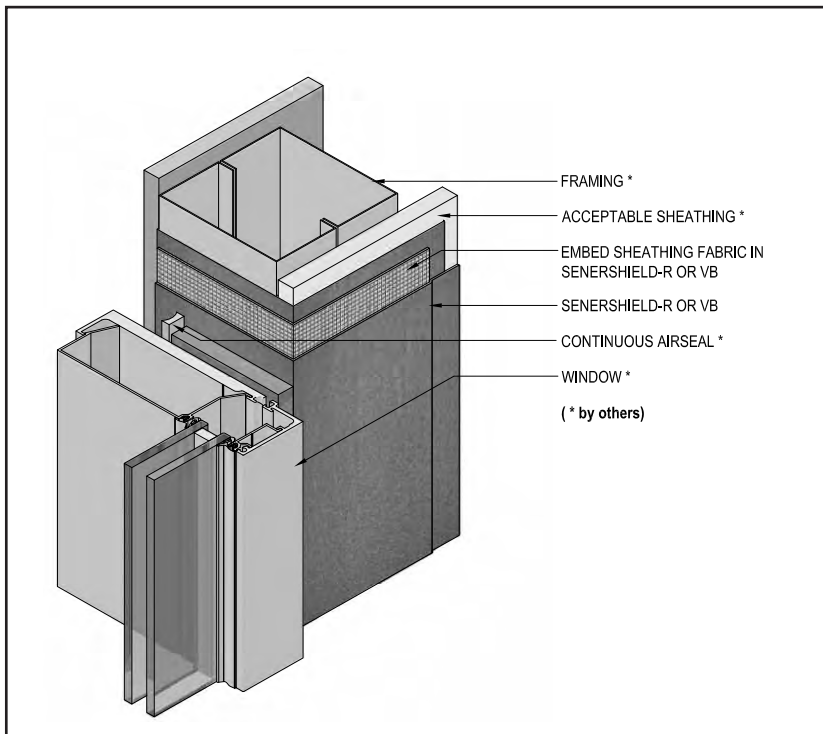


AWRB-09 0110

Notes:

- Install BASF materials in accordance with current installation instructions.
- Ensure continuity of air/water-resistive barrier is maintained.
- Provide end-dams at flashing terminations
- Install end/back dams as required.

TYPICAL WINDOW JAMB



AWRB-10 0110

Notes:

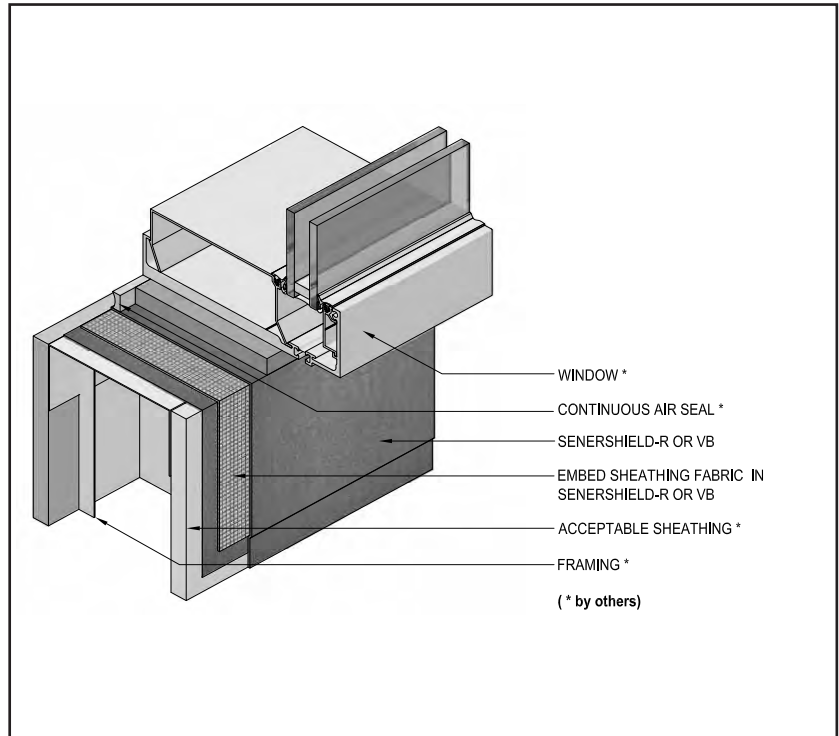
- Install BASF materials in accordance with current installation instructions.
- Ensure continuity of air/water-resistive barrier is maintained.
- Apply Senerflash over punched stud openings.

Air/Water-Resistive Barrier Details

Notes:

- Install BASF materials in accordance with current installation instructions.
- Ensure continuity of air/water-resistive barrier is maintained.
- Install end/back dam as required.
- See Detail AWRB-23 for pan flashing installation

TYPICAL WINDOW SILL

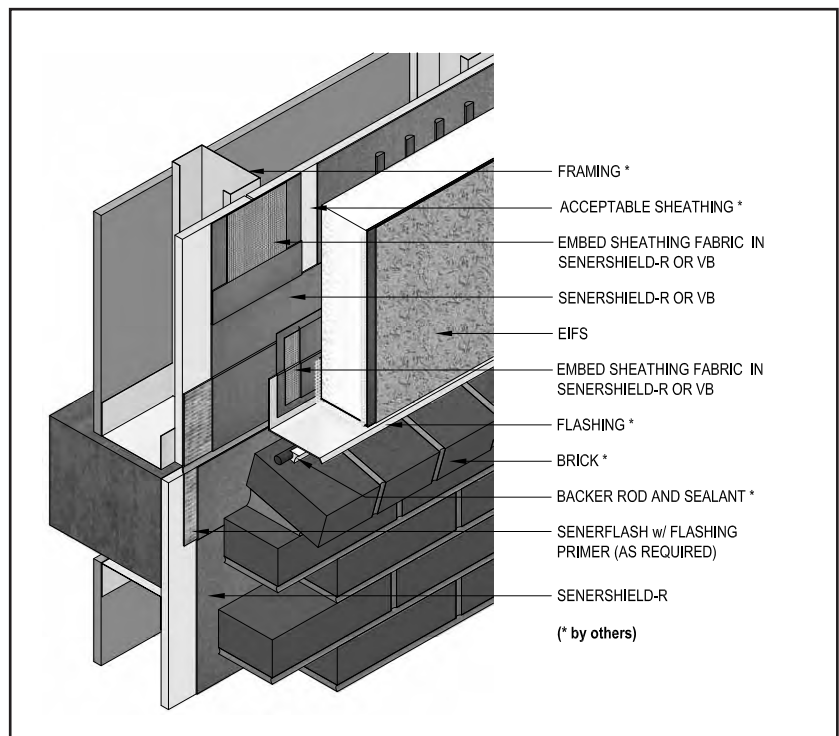


AWRB-11 0110

Notes:

- Install BASF materials in accordance with current installation instructions.
- Ensure Senershield-R / Senershield-VB fully covers Senerflash at floorline.
- Provide sufficient slack in the Senerflash at expansion joint to allow for movement.

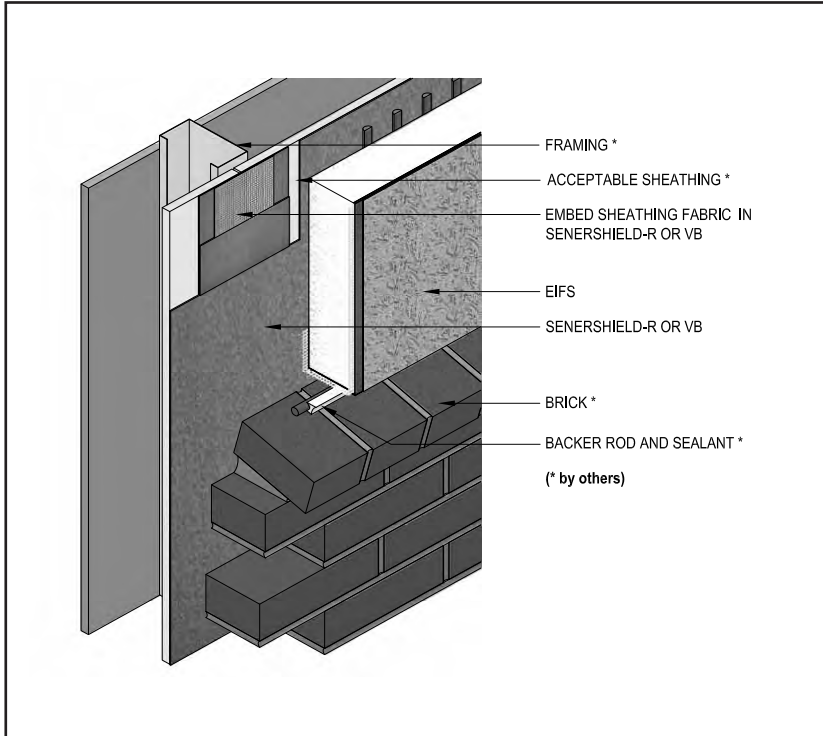
TYPICAL EIFS ABUTMENT TO BRICK WITH DRAINAGE AT FLOORLINE



AWRB-12 0110

Senershield®-R / Senershield®-VB

TYPICAL EIFS ABUTMENT TO BRICK

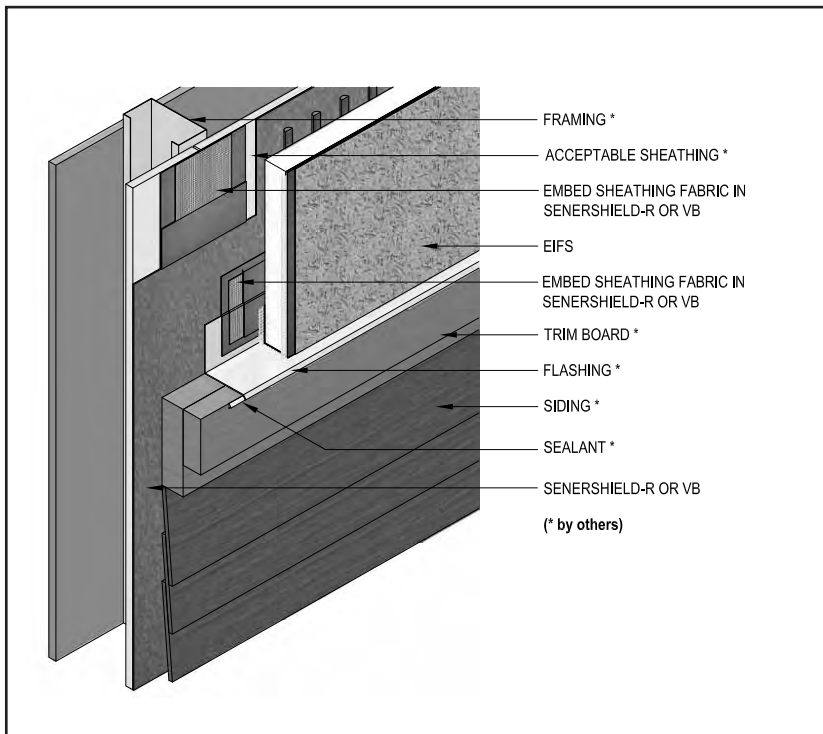


AWRB-13 0110

Notes:

- Install BASF materials in accordance with current installation instructions.
- Ensure drainage plane is continuous (unblocked); otherwise install flashing with drainage provision as show in Detail AWRB-12.

TYPICAL EIFS ABUTMENT TO SIDING



AWRB-14 0110

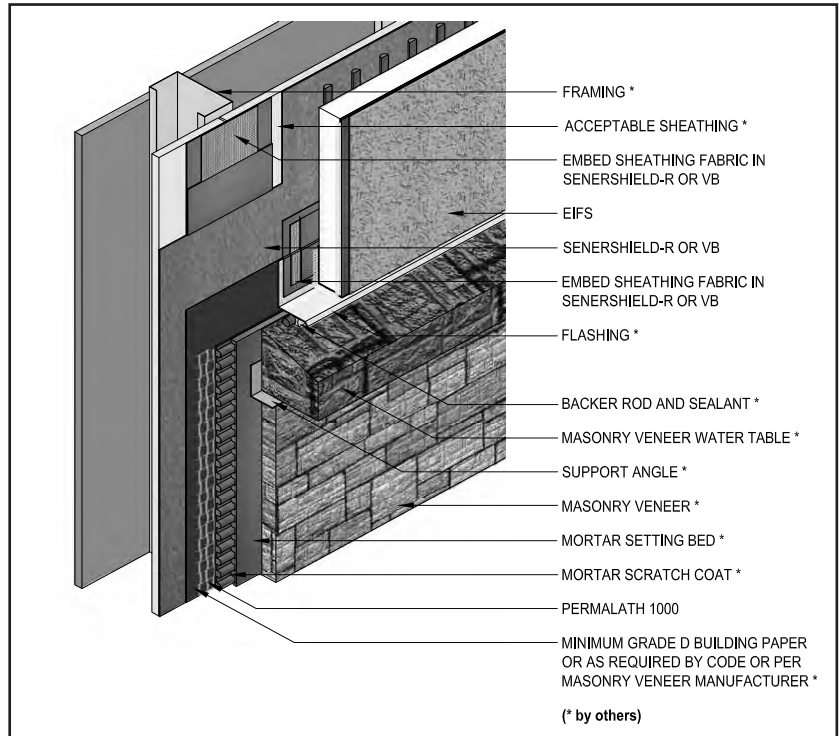
Notes:

- Install BASF materials in accordance with current installation instructions.

TYPICAL EIFS ABUTMENT TO MASONRY VENEER

Notes:

- Install BASF materials in accordance with current installation instructions.

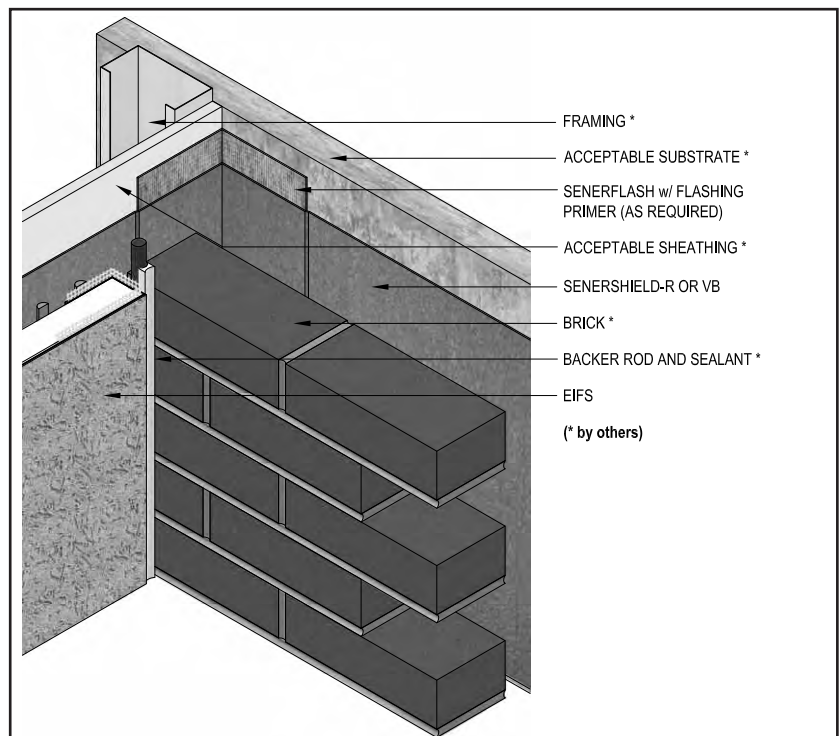


AWRB-15 0110

TYPICAL INSIDE CORNER CHANGE IN SUBSTRATE

Notes:

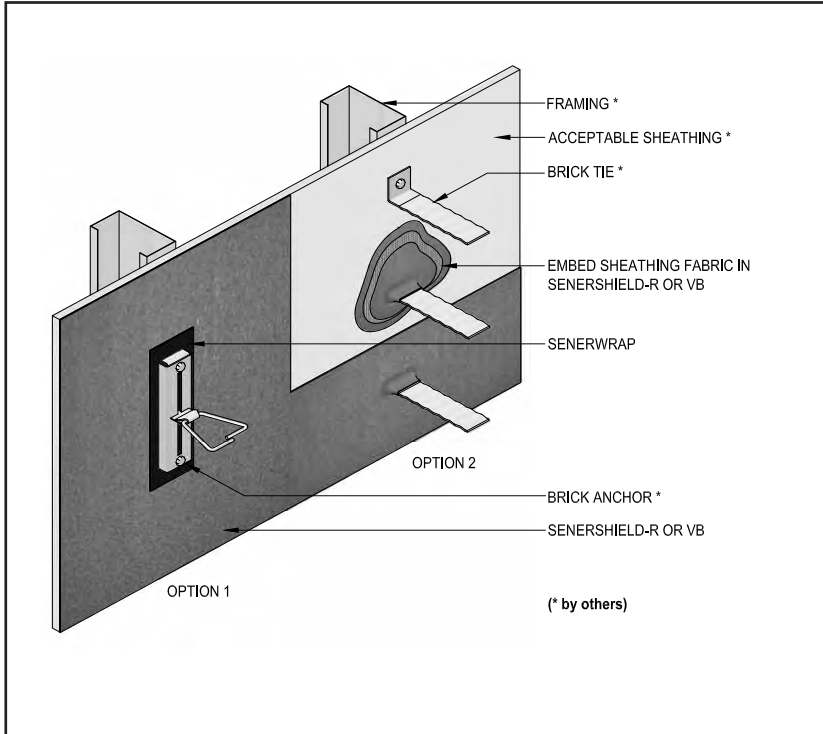
- Install BASF materials in accordance with current installation instructions.
- Senershield-R / Senershield-VB and Sheathing Fabric may be used as an alternate to provide an air/water-resistive barrier at transition.



AWRB-16 0110

Senershield®-R / Senershield®-VB

TYPICAL BRICK ANCHOR TREATMENT

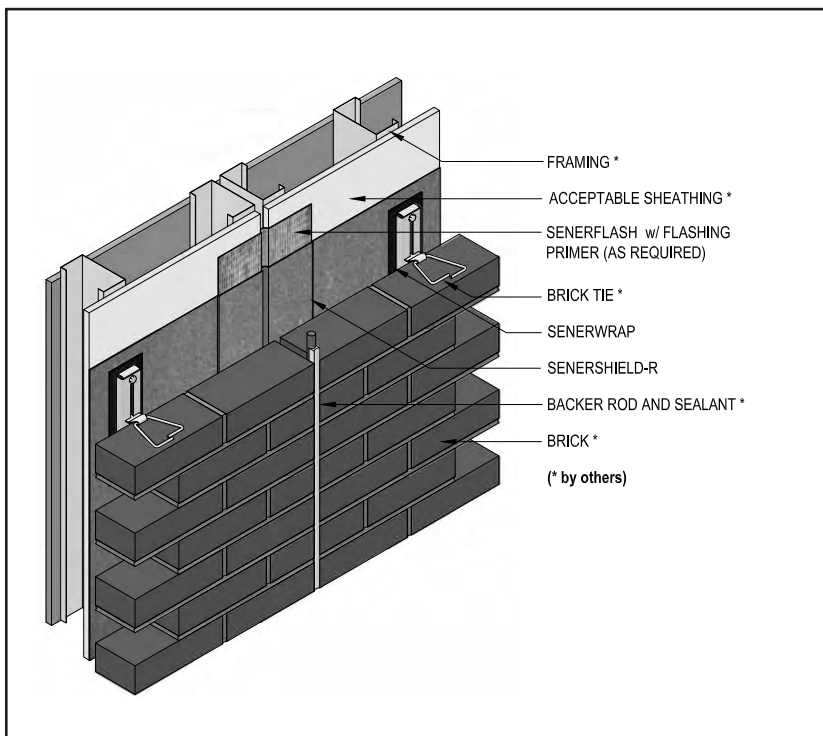


AWRB-17 0110

Notes:

- Install BASF materials in accordance with current installation instructions.
- Option 1: Apply Senerswrap to Senershield-R / Senershield-VB prior to application of brick anchor.
- Option 2: Seal brick anchor by embedding Sheathing Fabric in Senershield-R / Senershield-VB.
- Consult brick anchor manufacturer for proper attachment.

TYPICAL BRICK EXPANSION JOINT



AWRB-18 0110

Notes:

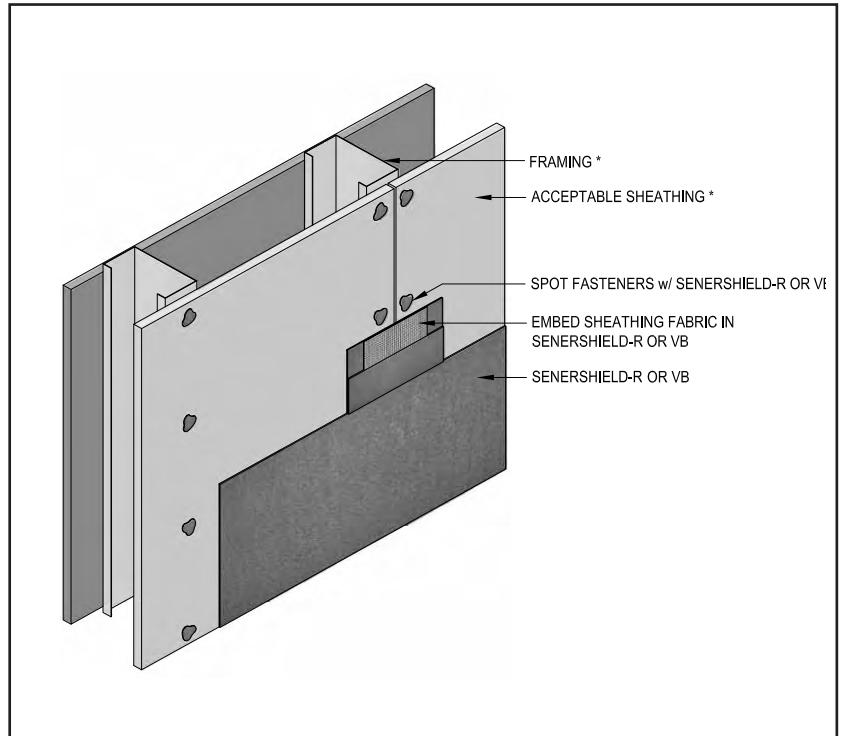
- Install BASF materials in accordance with current installation instructions.
- See detail AWRB-17 for typical brick anchor treatment.

Air/Water-Resistive Barrier Details

Notes:

- Install BASF materials in accordance with current installation instructions.
- Ensure all fastener heads are spotted with Senershield-R / Senershield-VB.

TYPICAL JOINT AND FASTENER TREATMENT

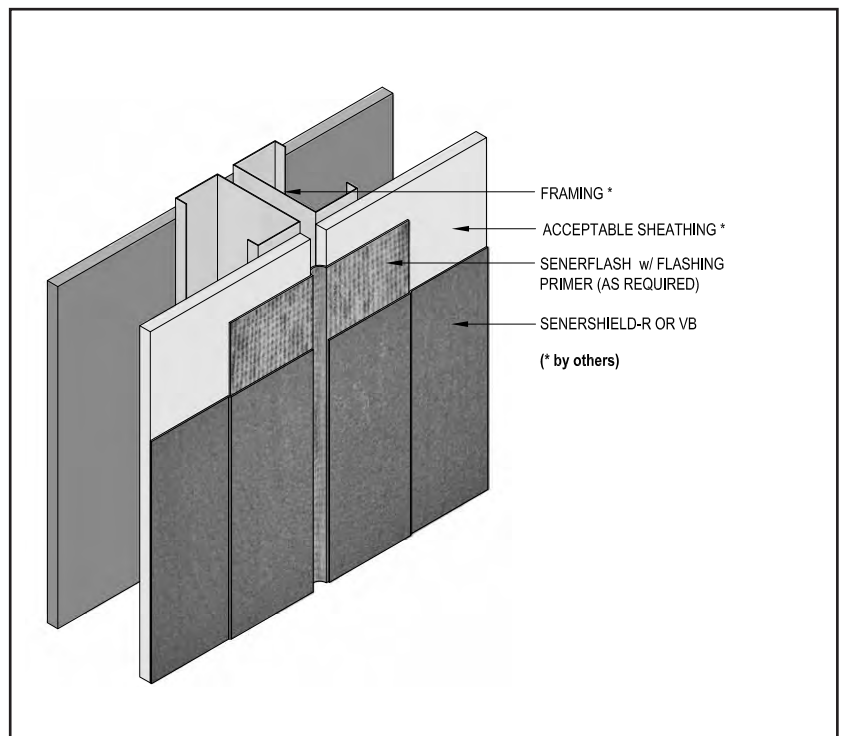


AWRB-19 0110

Notes:

- Install BASF materials in accordance with current installation instructions.
- Provide sufficient slack in the Senerflash at expansion joint to allow for movement.

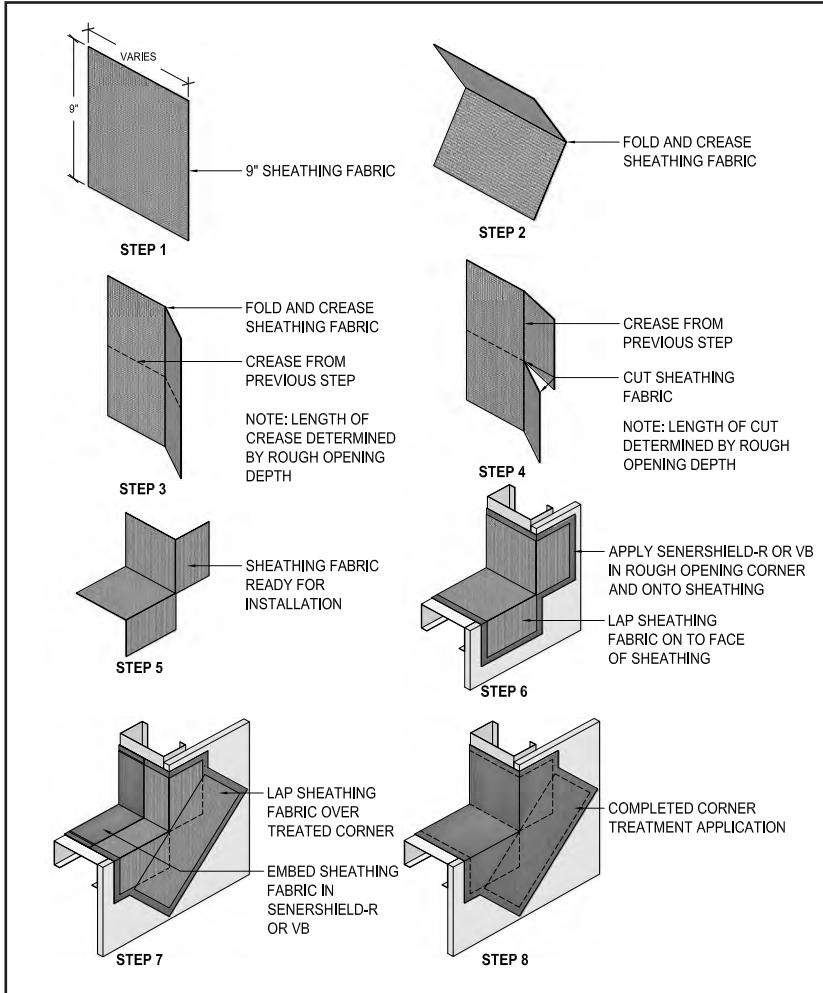
TYPICAL VERTICAL EXPANSION JOINT



AWRB-20 0110

Senershield®-R / Senershield®-VB

TYPICAL ROUGH OPENING CORNER REINFORCEMENT



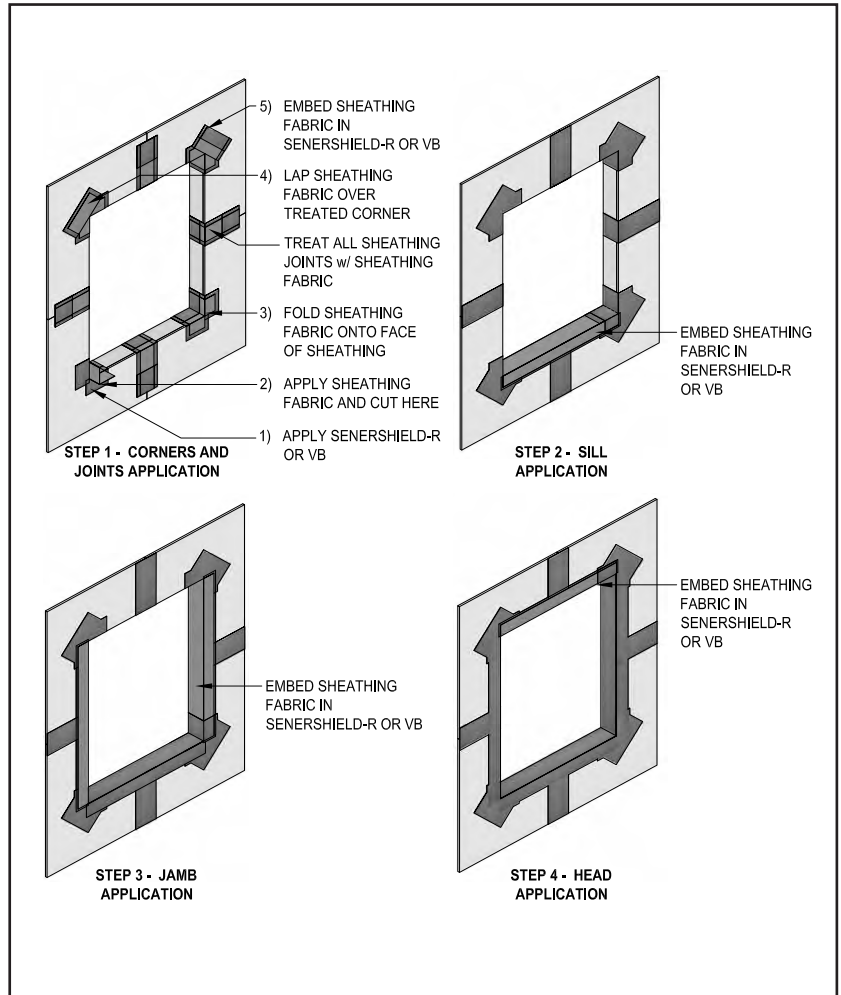
Notes:

- Install BASF materials in accordance with current installation instructions.
- Wrap rough opening in accordance with AWRB-22.

Notes:

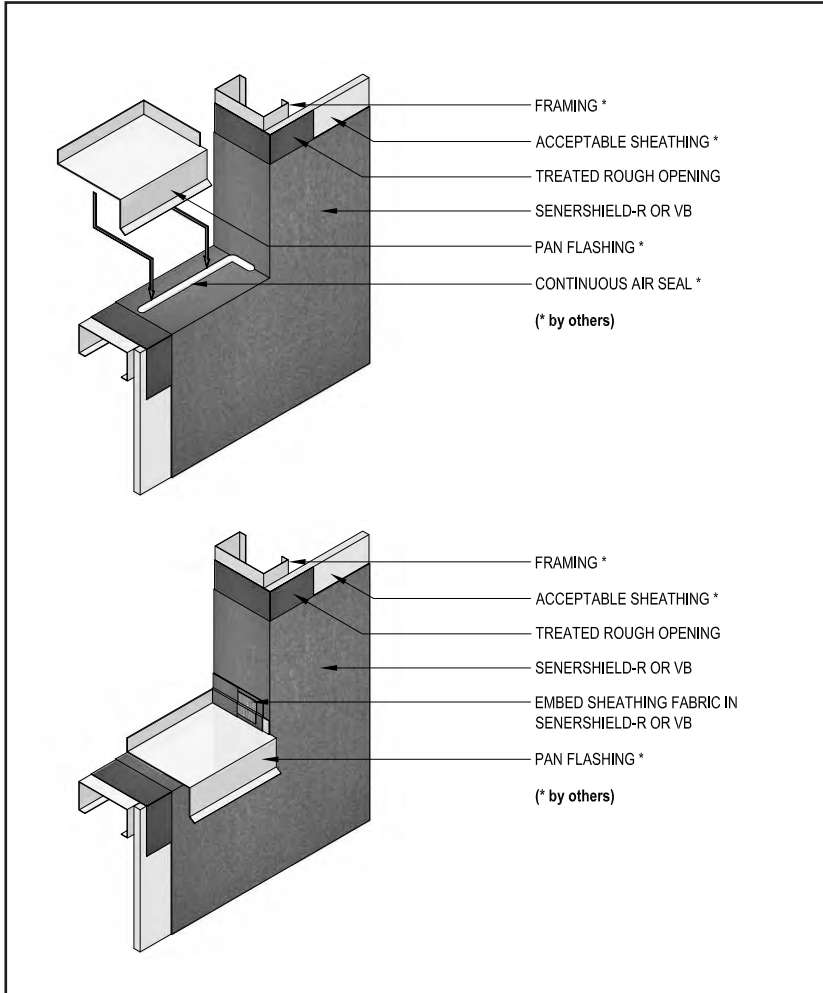
- Install BASF materials in accordance with current installation instructions.
- Ensure Sheathing Fabric is embedded in Senershield-R / Senershield-VB.
- Ensure Senershield-R / Senershield-VB and Sheathing Fabric are installed without voids.
- Apply Senerflash over punched stud openings.

TYPICAL ROUGH OPENING REINFORCEMENT



Senershield®-R / Senershield®-VB

TYPICAL PAN FLASHING



Notes:

- Install BASF materials in accordance with current installation instructions.
- Wrap rough opening in accordance with AWRB-22.
- Install sealant as depicted onto the sill and jamb.
- Install pan flashing into the wet sealant. Remove excess sealant as required.
- Install Sheathing Fabric into wet Senershield-R / Senershield-VB at the jamb end dams.

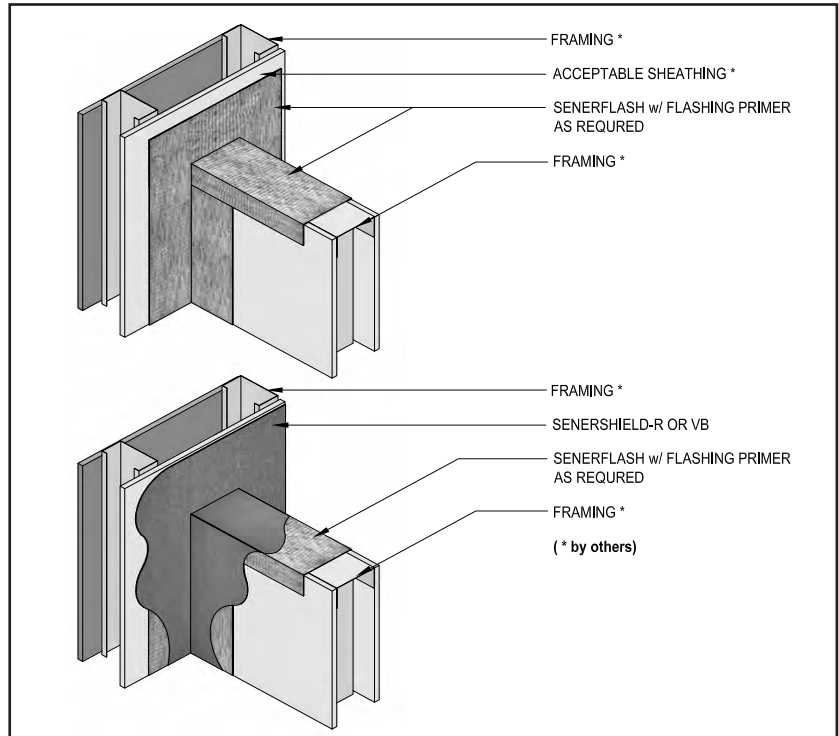
AWRB-23 0110

Air/Water-Resistive Barrier Details

Notes:

- Install BASF materials in accordance with current installation instructions.
- Ensure Senerflash is continuous without voids.
- Completely coat Senerflash with Senershield-R / Senershield-VB.

TYPICAL SADDLE APPLICATION

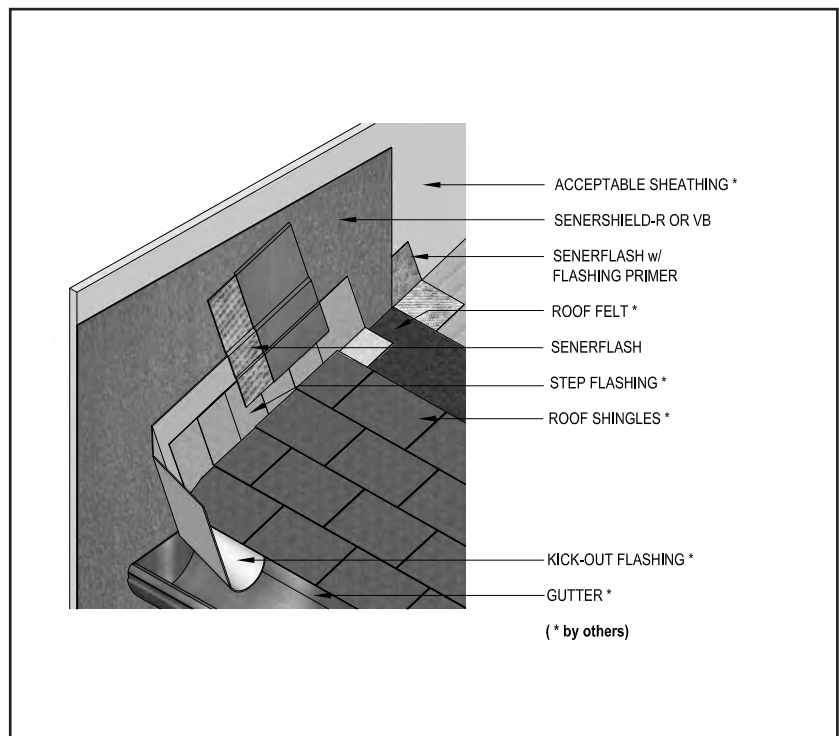


AWRB-24 0110

Notes:

- Install BASF materials in accordance with current installation instructions.
- Ensure Senershield-R / Senershield-VB fully covers Senerflash.
- Where Senerflash is installed over the flashing, ensure termination occurs a minimum of 2" above the roof.

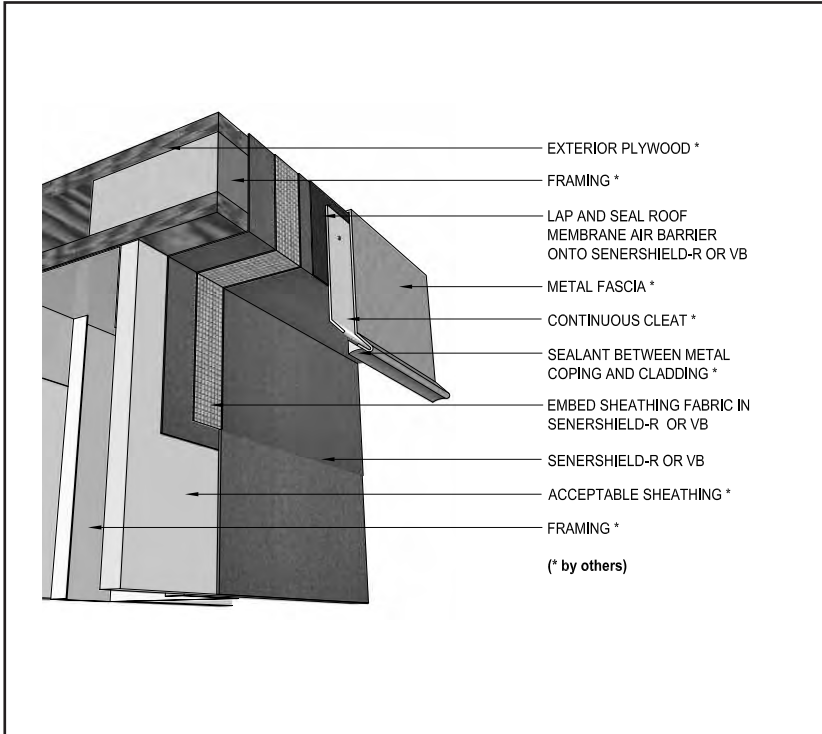
TYPICAL KICK-OUT FLASHING



AWRB-25 0110

Senershield®-R / Senershield®-VB

TYPICAL ROOF EDGE FLASHING

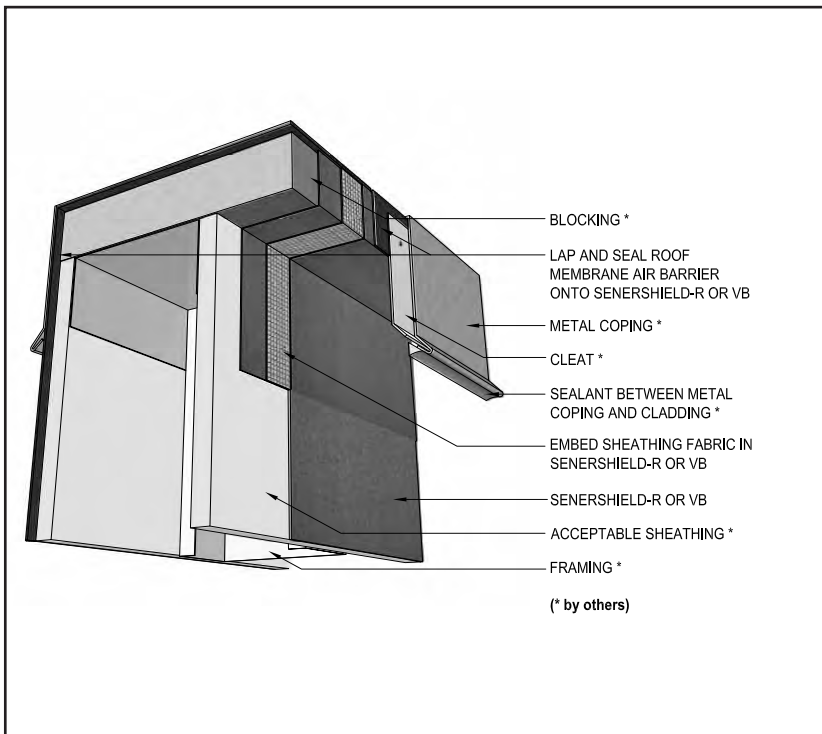


AWRB-26 0110

Notes:

- Install BASF materials in accordance with current installation instructions.
- Senerflash may be used as an alternate to provide an air/water-resistive barrier at transition of sheathing to blocking.

TYPICAL PARAPET CAP FLASHING



AWRB-27 0110

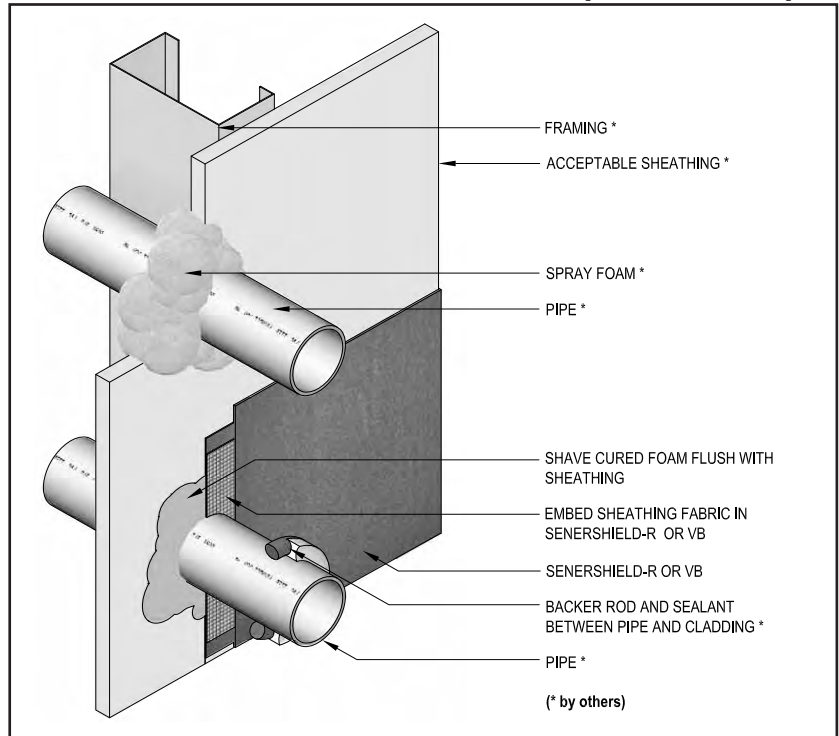
Notes:

- Install BASF materials in accordance with current installation instructions.
- Senerflash may be used as an alternate to provide an air/water-resistive barrier at transition of sheathing to blocking.

Notes:

- Install BASF materials in accordance with current installation instructions.
- Ensure spray foam is low expansion.

TYPICAL PENETRATION THROUGH WALL CONSTRUCTION (ROUGH CUT)

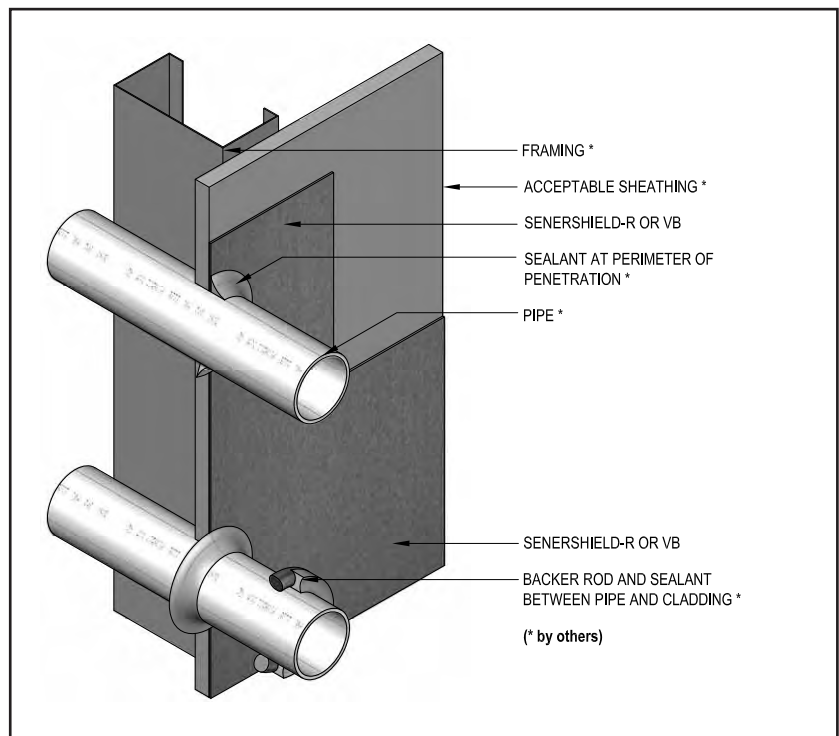


AWRB-28 0110

Notes:

- Install BASF materials in accordance with current installation instructions.
- Senerflash may be used as an alternate to provide air/water-resistive barrier around pipe.

TYPICAL PENETRATION THROUGH WALL CONSTRUCTION



AWRB-29 0110

NOTES

NOTES

Note

BASF Wall Systems is an operating unit of BASF Construction Chemicals, LLC. (herein after referred to as "BASF Wall Systems")

Residential Policy

Apply wall systems in accordance with local building codes in force at the time of construction. On one and two-family residential framed construction, BASF Wall Systems requires that the wall system selected be one that includes provisions for moisture drainage.

Disclaimer

This information and all further technical advice are based on BASF Wall Systems' present knowledge and experience. However, BASF assumes no liability for providing such information and advice including the extent to which such information and advice may relate to existing third party intellectual property rights, especially patent rights. In particular, BASF Wall Systems disclaims any and all CONDITIONS AND WARRANTIES, WHETHER EXPRESS OR IMPLIED, INCLUDING THE IMPLIED WARRANTIES OF FITNESS FOR A PARTICULAR PURPOSE OR MERCHANTABILITY. BASF WALL SYSTEMS SHALL NOT BE RESPONSIBLE FOR CONSEQUENTIAL, INDIRECT OR INCIDENTAL DAMAGES (INCLUDING LOSS OF PROFITS) OF ANY KIND. BASF Wall Systems reserves the right to make any changes according to technological progress or further developments. It is the customer's responsibility and obligation to carefully inspect and test any incoming goods. Performance of the product(s) described herein should be verified by testing and carried out only by qualified experts. It is the sole responsibility of the customer to carry out and arrange for any such testing. Reference to trade names used by other companies is neither a recommendation, nor an endorsement of any product and does not imply that similar products could not be used. It is the responsibility of both the specifier and the purchaser to determine if a product is suitable for its intended use. The designer selected by the purchaser shall be responsible for all decisions pertaining to design, detail, structural capability, attachment details, shop drawings and the like. BASF Wall Systems has prepared guidelines in the form of specifications, typical application details, and product bulletins to facilitate the design process only. BASF Wall Systems is not liable for any errors or omissions in design, detail, structural capability, attachment details, shop drawings or the like, whether based upon the information provided by BASF Wall Systems or otherwise, or for any changes which the purchasers, specifiers, designers or their appointed representatives may make to BASF Wall Systems published comments. For more information visit our website at www.wallsystems.basf.com.

BASF Wall Systems

3550 St. Johns Bluff Road South
Jacksonville, FL 32224-2614
Phone 800 • 221 • 9255
Fax 904 • 996 • 6300
www.wallsystems.basf.com